



The Focus on Home Quarterly

FOCUS ON HOME FEATURE FAMILY

We'd like to introduce you to Shenita Jefferson, one of our special Focus recipients, and Brandy Romine, Shenita's caseworker at Hope House. Shenita and her three daughters, Faith (17), Amani (9), and Anyiah (8), are our Feature Family for this quarter. Shenita works at Peaceful Family Solutions, which is a non-profit dedicated to children affected by drugs and alcohol. This subject is near and dear to her as she has battled alcohol addiction in the past. Her lowest point was back in August 2015, when she was arrested.

ReMerge, an organization that helps people get back on their feet, came and took her out of jail and into their program. Three months into the program, she spoke with her counselors and reached out to Hope House to further help her with housing. This is where Brandy Romine came into the picture.

"There I met Mrs. Brandy Romine. She was my case manager as well as a friend. We prayed every time we met for case management. I trusted that God had me at Hope House for a reason. Today we still get together and pray." says Shenita. Brandy lead Shenita through the Hope House program, where Shenita found a job with benefits and a house she could afford.



Shenita had a support system, a job with benefits, and a house, but something was missing. Furniture. That's where we stepped up to the plate. "Shenita had secured permanent housing, but was still in great need of furniture items, bedding, decorations. Shenita could have moved out and had a roof over her head, but

Focus on Home came in and allowed Shenita to move into a "home". She wanted her girls to be excited about their new journey as a family as opposed to being nervous as to what was next. By transforming their empty space into a warm, home, the girls became excited and felt comfortable beginning this new season living full time with their mom."

(continued on page 2)



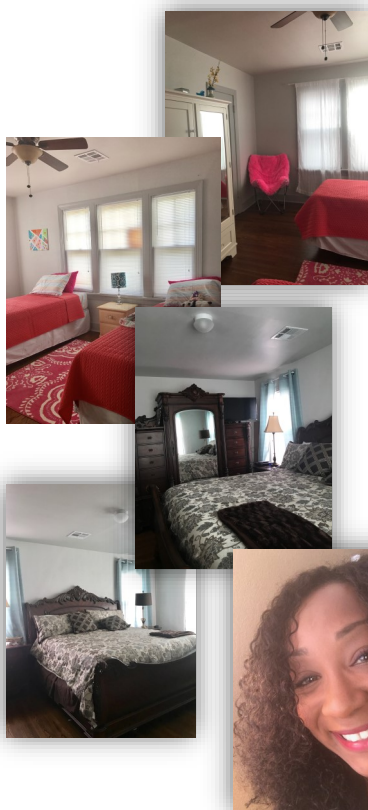
SPECIAL THANK YOU TO:

- Gaylord Foundation
- Joey's Pizza
- Oklahoma Victory Dolls Roller Derby

UPCOMING

- August 5th & 6th –Donation event, West Elm at Classen Curve
- Furniture Placement and Warehouse Days
- 2017-2018 Teen Board, contact Abby Tompkins at tompkinsabby@gmail.com.





FOCUS ON HOME FEATURE FAMILY (CONTINUED FROM PAGE ONE)

Focus on Home took note of Shenita's needs and began putting together a house full of furnishings for this family. The girls have bright pink bedspreads and storage for their clothes and toys. Shenita now has a comfy bed to rest her head after a long day of work. "I don't snore any more according to my daughter. I get great sleep."

We asked Shenita what she has learned from this experience. "I have learned mainly that asking for help, being humble, patient and open minded are key in living a sober and successful life." Alt-

hough Shenita is on her own now, she is never alone.

Brandy connects with her frequently and this friendship is not going anywhere. "My hopes are that Shenita will continue pressing into her dreams of impacting the world around her for good. There are a lot of distractions and obstacles in life, but I hope she chases her dreams with all her might just as she did while she was in the HopeHouse OKC Program. She is bold, passionate, smart, articulate, and a dreamer...I can't wait to see what's next for her."

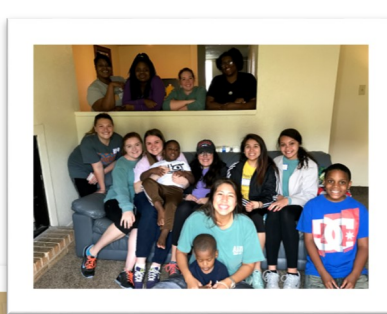
FOCUS ON HOME CHANGED MY LIFE. I LOVE MY HOME.

THEY MADE MY HOUSE A HOME. -SHENITA JEFFERSON

A HUGE THANK YOU TO OUR VOLUNTEERS

We couldn't have done anything without our volunteers. They have met us at the warehouse to pull and match furnishings for houses. They have loaded and unloaded hundreds of pieces of furniture (often quite heavy!) , usually to the excited pitter-patter of children's feet, wanting to help set up their new home. They have braved the cold and heat, always with a smile and hugs for all. We rely so much on the gentle people who make time to make a difference. Thank you. We love you and we are grateful.

Contact Stacey Cole for volunteer info at volunteer@focusonhome.org.





FOCUS ON HOME TURNS THREE IN AUGUST!

Has it been three years already?

Time flies and, oh my, how we have changed.

This quarter we have had the pleasure of furnishing homes for 122 families. Each family has their unique story of trials and triumphs and we are honored to be a part of their success. These people are hard-working, loving human beings that deserve a comfortable abode to come home to and feel pride in. We can't wait to see what's in store for them and for us!

This blessed third anniversary of Focus on Home means many things. We know we're on the right track by the smiles and happy tears of our Focus families. Our warehouse is frequently depleted by the sheer number of homes we furnish, and that is a good thing. An empty warehouse means someone else's house is full, but it also means we need more furniture and donations to keep us afloat for the next family that crosses our path.

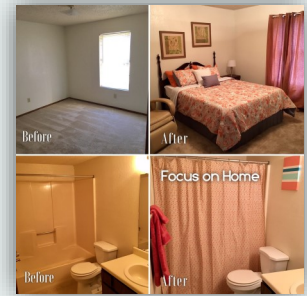
We will be starting our Capital Campaign today, and it will run until September 1st. Any and all amounts of money would help. We are now offering the option of recurring monthly donations of any size. Every dollar goes toward cribs, sheets, beds, blankets, shelving, and so much more. When you think about the necessities it takes to make a comfortable home, they really add up. Especially if children are a factor. Kids deserve a soft and safe place to sleep at night.

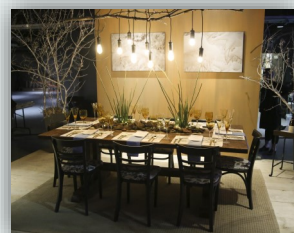
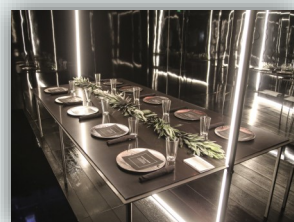
You may donate to Focus on Home via our website, www.focusonhome.org and select the Donate Tab or send donations to:

Focus on Home

6608 N. Western Ave. #202

OKC, OK 73116





DESIGN APPETIT 2017

Remembering the hard work and long hours dedicated to making Design Appetit a success. A heartfelt thank you to all of the sponsors, design teams, and participants.

Presenting Sponsor

Inasmuch Foundation

Pantone Gold Fusion Sponsor

Dr. & Mrs. William Lee Beasley

Love's

Pantone Silver C Sponsor

Bank SNB

Bentley Flooring

Joli and Cam Stevens and Vanstavern Design Group

Samantha Roberts & Angie Kerschen

Smith Lighting Sales

Pantone Bronze Mist Sponsors

Chickasaw Nation

Heather Fieth

Harrison-Orr Ait Conditioning, LLC

John and Janet Hudson

Richard Sias

Smith and Pickel

Pantone Wrought Iron Sponsor

Dr. & Mrs. Justin Beasley

Sherri and David Boyd

Oklahoma Fidelity Bank

Shaw Contract, Tony Buchanan

The Magnolia Charitable Foundation

Cindy and Hugh Rice

Julie and Stan Rankin

Sylvia and Robert Slater

In-Kind Sponsors

Anglin PR

Tracey & Rick Bewley/Art Fusion

Central Liquor

Eventures, Inc

Ned's Catering

Oklahoma Gazette

Vanessa House Beer Co.



Over \$55,000 was raised by this event!

The 2018 Design Appetit will be

April 11th - 13th

for information on participating
contact info@focusonhome.org

THANK YOU TO IIDA FOR BENEFITTING US AT THIS YEAR'S COLOR AND COUTURE

We had a great turnout at IIDA's Color and Couture event. The design firms that participated wowed us again with amazing emblems and glittering models.



This event raised \$3,726.55 for Focus on Home!

WEST ELM FURNITURE DRIVE



Have you broken up with your couch and you're looking for a new one?! Are you sick of that dresser your mom repurposed?

Donate your *gently* used furniture to Focus on Home, August 4th-5th! Focus on Home will have moving vans ON SITE and all donations are tax deductible! Did we mention the 20% discount coupon you get for being generous ??

Focus on Home takes your gently used furniture and helps families in need in OKC make their house a home. For more info contact West Elm and to find out more about this great charity, visit focusonhome.org

